



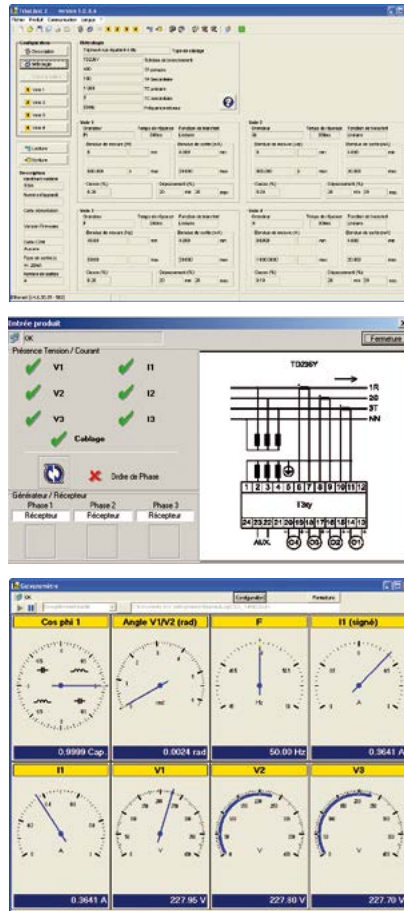
# TRIADJUST 2 software

Designed for quick configuration and display of all the parameters of your TRIAD 2 transducers

Programmable digital transducers  
Measurement and instrumentation

**PRODUCT ADVANTAGES**

- ➕ **CONFIGURATION** via **OPTICAL HEAD**, **ETHERNET** or **RS485**
- ➕ **ACCESS** to **ALL** the **TRIAD 2 PARAMETERS**
- ➕ **DIAGNOSIS** of the **INSTALLATION**
- ➕ **LABEL PRINTING** on **ALL TYPES OF LASER PRINTERS**



### Configuration

- Inputs / Outputs
- Communication
- Connection diagram
- Accuracy class
- Set-up function protected by password

### Diagnosis

- Voltage inputs
- Current inputs
- Cabling
- Phase order
- Analogue outputs
- Fresnel

### Display

- Instantaneous quantities (in digital or analogue form)

### Recording

- In real time in exported file

## ► Description

The **TRIADJUST 2** software allows quick, unlimited programming of all your TRIAD 2's parameters.

Using a PC and the optical lead supplied in each kit, connect your product's auxiliary power supply to dialogue with total security. Depending on your TRIAD 2's configuration, remote communication is possible via RS485 or Ethernet.

In the Windows™ environment, initialize or simply modify the quantities measured, the measurement ranges and the analogue outputs on the transducers installed.

**TRIADJUST 2** also offers other functions such as **DIAGNOSIS** of your network, instantaneous **DISPLAY** of the electrical quantities and **REAL-TIME RECORDING** of the measurements in an exported file.

You can also print labels indicating the configurations and connections of your products.

## ► Minimum configuration

**Platform:** PC

**Operating system:** Windows 2000 or XP

**Processor:** Pentium-compatible

**RAM:** 128 MB

**Hard disk:** 40 GB

**Drive:** CD-ROM

**Communication port:**

Local: USB 1.1 minimum

Remote: RS485 and/or Ethernet

## KIT TRIADJUST 2



The **TRIADJUST 2 configuration kit** comprises:

- The TRIADJUST 2 software
- An optical / USB lead
- 30 sheets of blank labels
- A 230 x 185 x 45 mm carrying case

## TRIADJUST 2 “PREMIER”



This module is a **complete tool** designed for distributors or any user needing to program a large number of transducers

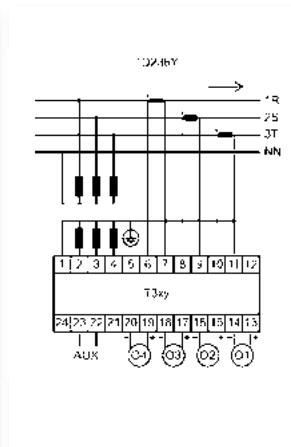
The TRIADJUST 2 “PREMIER” configuration workstation comprises:

- The TRIADJUST 2 software
- An optical / USB lead
- A benchtop power-supply base
- 210 sheets of blank labels
- A 500 x 400 x 270 mm carrying case

## Labels common to both kits

A sheet contains two labels, one for the configuration of the inputs/outputs and the other for the programmed connection diagram. The labels can be printed on all types of laser printers.

T314	
<b>Inputs:</b>	<b>50-60 Hz</b>
<b>10 000 V/√3</b>	<b>100 V/√3</b>
<b>1 000 A</b>	<b>5 A</b>
<b>AO 1: V1</b>	0,20   200 ms   750 Ω
	0V...5 773,5V
	4 mA...20 mA
<b>AO 2: I1</b>	0,20   200 ms   750 Ω
	0A...1 000A
	4 mA...20 mA
<b>AO 3: Pt</b>	0,20   200 ms   750 Ω
	0W...17,32 MW
	4 mA...20 mA
<b>AO 4: F1</b>	0,20   200 ms   750 Ω
	45 Hz...55 Hz
	4 mA...20 mA
Made in France	
Reference client / Own reference customer	
<input style="width: 100%; height: 20px;" type="text"/>	



### T O O R D E R

Model	Reference
TRIADJUST 2 kit	P01380410
TRIADJUST 2 “PREMIER” workstation	P01380420
Accessories	
Set of 30 sheets of blank labels	P01380400
Optical/USB lead	P01330403

## ► Associated product

TRIAD 2 programmable  
with TRIADJUST 2

► page 224

